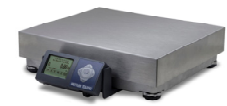


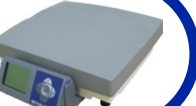
BC Scale Quick Start Guide

See back for detailed instructions and FAQ

Models BC-60 & BC-30



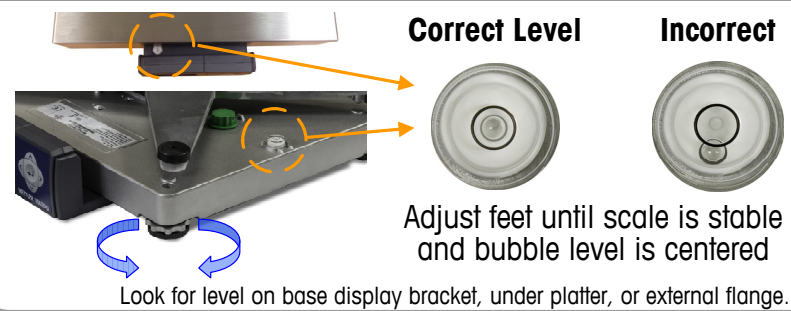
BC-15



1 Unpack and Verify Contents:



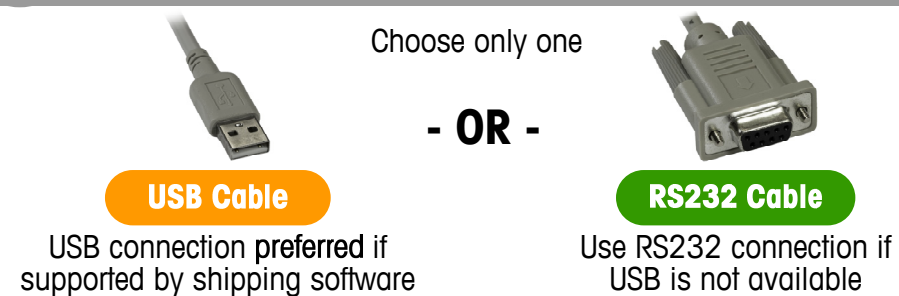
2 Adjust Feet to Level Scale



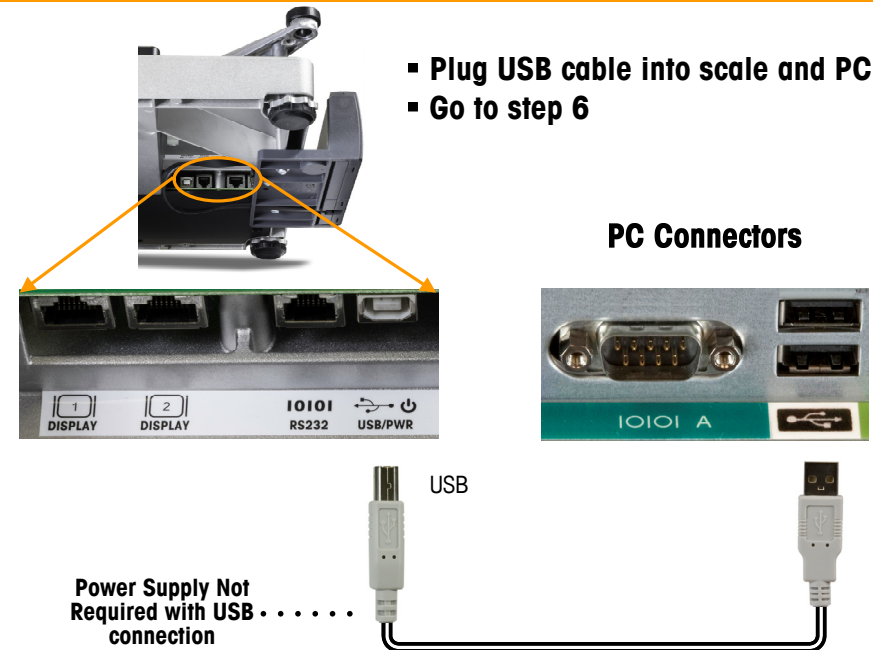
3 Place Platter on Scale



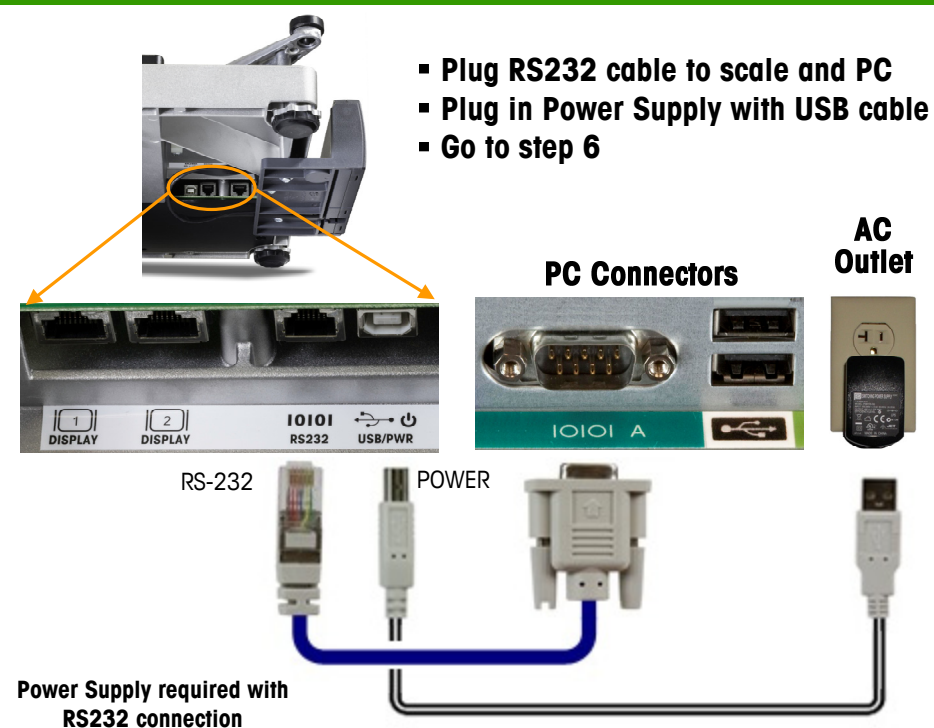
4 Confirm Connection Type



5a Connect via USB Cable

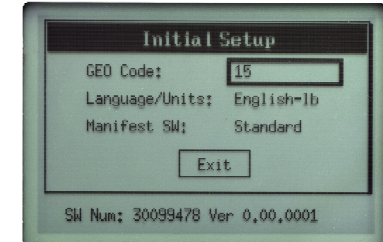


5b Connect via RS232 Cable



6 Enter Setup Code

- !! Observe display on first power up !!**
- If "0.00" is displayed, no code is required. Go to step 7.
 - If "GEO Code" is displayed, enter two digit GeoCal Location Code for your area from the chart on the back.

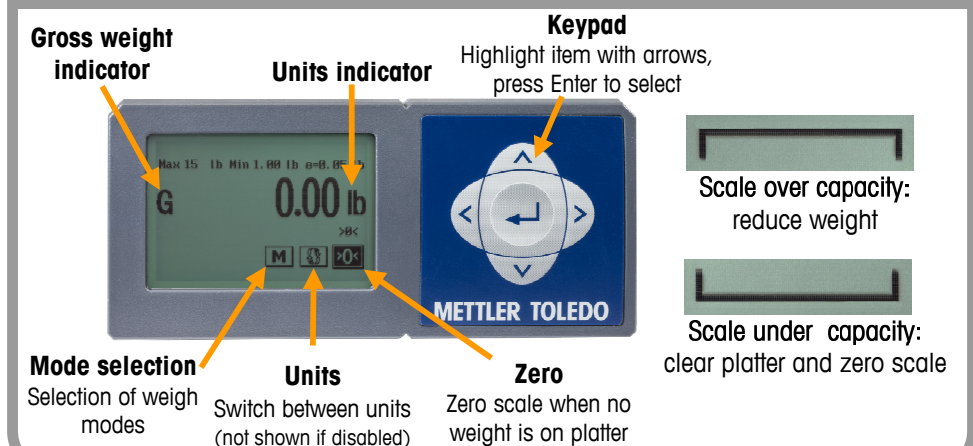


- Press ◀ or ▶ to scroll through codes. Numbers will repeat.
- Use ▼ key to select Language/Units and Manifest SW, if enabled. Use ◀ or ▶ to set proper selection. Options will repeat
- Press ▼ to Exit and press enter ↵, Scale will reboot

7 Configure PC Software

- Open your carrier, shipping, or POS software on the PC.
- In the shipping software setup screen, select the proper scale model from the pull down list (e.g., "Toledo, PS60, or BC60").
- For additional assistance, contact your software provider.

Scale Operation



For additional product and technical support:
www.mt.com/Ind-BCscale

METTLER TOLEDO

Installation Instructions

- Remove contents from box, confirm all hardware is present:
 - Scale Base & Display
 - Platter
 - USB Cable
 - RS232 Cable
 - Power Supply
- With platter off, level the scale by adjusting the feet until the scale is stable and the bubble is centered inside the reference circle.
- Place platter on scale. There should be nothing touching the scale.
- Choose one method of connecting the scale to your PC: USB or RS232.
 - Preferred method is USB if supported in carrier or shipping software.
 - USB connection must be used if scale is to communicate with multiple carrier or shipping software programs.
 - DO NOT connect both USB and RS232 cables to the same PC at the same time.
- Turn the scale over and make the PC connections as follows:

USB

- Plug small end of USB cable into the scale connector port marked "USB".
- Plug large end of USB cable into the PC. A direct connection to the computer is required.

Note: The scale is adequately powered by the USB port so the Power Supply is not needed with USB connection.

RS232

- Plug the small end of the RS232 cable into the scale connector port marked "RS232". Connect the large end of the RS232 cable to the PC port (Generally labeled COM 1, COM A or IOIO).
- Plug large end of the USB cable into the power supply. Plug small end into USB connector. Plug Power Supply into AC outlet.

If you plugged the RS232 cable into the incorrect PC port, turn off the computer, then change ports and reboot your computer.

- The very first time the scale is powered up, if the display shows "0.0", skip to Step 7. If the display shows "GEO Code", then enter GeoCal code as follows.
 - Choose the code from the chart at right that best matches your location.
 - With Geo Code box highlighted, press the < or > to scroll to that number. Numbers will repeat.
 - Use down key to highlight Language/units if enabled. Press the < or > key to scroll to the proper selection. Items will repeat. Do the same for the Manifest SW
 - Press down key to highlight EXIT and press "enter". Scale will reboot. Consult Technical Manual on website if GeoCal code needs to be re-entered.
- Configure your carrier, shipping, or POS software to communicate with the scale. Make the proper scale selection from the pull-down list in the software setup or configuration screen, typically a variation of "METTLER TOLEDO", "TOLEDO", "PS60" or "BC60". For additional support, please contact your carrier or shipping software provider.

Technical and Product Support

Support documents can be found at www.mt.com/ind-BCscale. If unable to resolve your problem or if you need to obtain warranty or repair service, please call Mettler Toledo at 1-800-786-0812. Please have the following information available and be at your scale and computer when calling.

- Scale Model, Code and Serial number (S/N)
- Carrier or shipping software name and version number

Remove platter to access data label or go to Menu SetUp > Info > Model

MODEL: BC	METTLER TOLEDO
5 VDC 100-150 mA	S/N: 67058176MQ
Temperature: 0°C / 40°C	
U.S.: Max 150 lb / 68 kg CC No. 13-111	
CANADA: Max 150 lb / 68 kg AM-XXXX	
EUROPE: Max 60 kg TXXXX	
OIML: Max 60kg R76/20XX-NL1-XX.XX	
CODE: BCA-222-60U	

Trouble-Shooting and FAQ

- Scale is not communicating by Serial.
 - This indicates invalid parity setting in the PC RS232 connection setting. Confirm the correct scale model is selected in the shipping software ("TOLEDO", "PS60" or "BC60").
 - If above does not work, confirm PC settings and reconfigure the scale RS232 settings to match. Refer to Technical Manual at www.mt.com/ind-BCscale, Go to HOME>SETUP>COM>SERIAL.
- My display screen is blank.
 - Power supply may be unplugged or display cable not attached to scale base.
 - Look at the cable connectors on the bottom of the scale, check to see if green light is energized on the PCB. If not, check USB cable connections.
 - If using USB, make sure USB cable is pushed in all the way at both scale and PC.
 - If using RS232, confirm power supply is plugged into working AC outlet, USB cable is plugged into power supply and USB cable is plugged properly into scale base.
 - If you have verified that the scale is receiving power, and you still have nothing on the display, then unplug and reinsert the display connector into the scale base.
- The scale is showing brackets on the display.
 - This indicates Over or Under weight capacity. This can be caused by putting too much weight on the scale or by powering up the scale when there is weight on it.
 - Disconnect power by unplugging the USB cable or power supply. Remove any weight from the scale, then plug the scale back in. The scale will reboot, and will capture zero.

- Can I connect the scale to a USB Hub adapter that has multiple USB ports?
 - Yes, the scale can communicate through a USB hub.
- Do I plug in the Power Supply when I use the USB cable?
 - When communicating by USB, the PC also provides power to the scale. Power supply is not needed.
 - When communicating by serial, the USB cable is used with the power supply. Scale is powered through the USB port. Serial communication is through the serial port
 - If you are communicating by USB and the PC can not provide power, utilize a powered USB hub.
- Why would I need a Ball Top or Roller Top Platter?
 - The Ball Top and Roller Top platters allow packages to slide easily on the scale. They are often used when handling heavy packages or a large quantity of packages. The Roller Top is often used for conveyor feed (Right-Left). The Ball Top allows rotation or movement in all directions and is often used at retail counters or in mail rooms.
- Why would I need a Remote Display?
 - Remote Displays make it easy to see the weight if the scale is on the floor or if a large package blocks the view. In retail pricing applications, local Weights and Measures regulations typically require a customer display. Accessory kits (below) allow a 2nd wall or tower display to be added to the existing base display.

GeoCal™ Location Codes

State	Code	State	Code	State	Code
Alabama		Indiana		North Carolina	
Birmingham & North	13	North of Indianapolis	16	Raleigh & North	14
South of Birmingham	12	Indianapolis & South	15	South of Raleigh	13
Alaska		Iowa		North Dakota	18
Anchorage & South	23	North of Des Moines	17	Ohio	
Anchorage - Kotzebue	26	Des Moines & South	16	Akron & North	16
North of Kotzebue	27	Kansas	14	South of Akron	15
Arizona		Kentucky	14	Oklahoma	13
Phoenix & North	12	Louisiana	12	Oregon	
South of Phoenix	11	Maine	18	Salem & North	18
Arkansas	13	Maryland	15	Salem - Oakridge	17
California		Massachusetts	17	South of Oakridge	16
North of Chico	16	Michigan		Pennsylvania	16
Chico - San Francisco	15	NW of Lake Michigan	18	Rhode Island	16
San Fran. - Bakersfield	14	SE of Lake Michigan	17	South Carolina	13
South of Bakersfield	13	Minnesota	18	South Dakota	17
Colorado		Mississippi		Tennessee	13
Denver & North	13	Kosciusko & North	13	Texas	
South of Denver	12	South of Kosciusko	12	NE of Colorado River	12
Connecticut	16	Missouri		SW of Colorado River	11
Delaware	15	North of Springfield	15	Utah	13
Florida		Springfield & South	14	Vermont	17
West Palm Beach & North	11	Montana		Virginia	14
South of West Palm Beach	10	Helena & North	18	Washington, DC	15
Georgia	12	South of Helena	17	Washington State	18
Hawaii	9	Nebraska	15	West Virginia	15
Idaho		Nevada	13	Wisconsin	
North of Salmon River Mt.	17	New Hampshire	17	Green Bay & North	18
South of Salmon River Mt.	16	New Jersey	16	South of Green Bay	17
Illinois		New Mexico	11	Wyoming	
Bloomington & North	16	New York		North of Casper	15
South of Bloomington	15	Albany & North	17	Casper & South	14
		South of Albany	16		

Note: If scale is used for retail pricing, please contact your local Weights & Measures office to have the scale tested and certified "Legal for Trade". www.ncwm.net/state

Accessories & Replacement Components

	BC-60	BC-30	BC-15
10' RS232 Extension Cable	62010759	62010759	62010759
Wall Mount Display	7 Seg	02703100000	02703A00000
	Graph	02713100000	02713100000
Tower Display	7 Seg	02702100000	02702A00000
	Graph	02712100000	02712100000
Ball Top Platter	09060161000 62009622	--	--
Roller Top Platter	09060164000 62010768	--	--
Stainless Steel Platter	68002726	68002726	--
ABS Plastic Platter	62032007	62032007	72999417
Power Supply	64067873	64067873	64067873
Base Mount Display	02711100000	02711100000	027111C00000



Mettler-Toledo, LLC
1900 Polaris Parkway
Columbus, OH 43240
PN 30126767 Rev A 03/2014
© 2014



30126767